

# 1. AGENCY OVERVIEW

---

Livermore Area Recreation and Park District (LARPD) provides public park operation and maintenance for local and regional parks and recreation services to the City of Livermore and surrounding unincorporated areas of South Livermore Valley and north Livermore. LARPD serves an expansive area, covering a substantial portion of the eastern unincorporated area in Alameda County. The last Municipal Service Review (MSR) for LARPD was completed in 2006.

## FORMATION

LARPD was formed on June 10, 1947 as an independent special district. The District's purpose is to provide park and recreation services to residents within the District's boundaries as described above.

The principal act that governs LARPD is the Recreation and Park District Law.<sup>1</sup> The principal act empowers recreation and park districts to 1) organize, promote, conduct, and advertise programs of community recreation, including, but not limited to, parks and open space, parking, transportation, and other related services that improve the community's quality of life, 2) establish systems of recreation and recreation facilities, including, but not limited to, parks and open space, and 3) acquire, construct, improve, maintain, and operate recreation facilities, including, but not limited to, parks and open space, both inside and beyond the district's boundaries.<sup>2</sup> Districts must apply and obtain LAFCo approval to exercise latent powers, that is, those services authorized by the principal act but not provided by the district by the end of 2000.<sup>3</sup>

## BOUNDARY

LARPD's boundary area includes the City of Livermore and most of the unincorporated area east, southeast, and north of Livermore, plus a few smaller unincorporated areas west of Livermore and east of Pleasanton. The unincorporated area within LARPD bounds is bounded by Contra Costa County to the north, San Joaquin County to the east, Santa Clara County to the south, and the cities of Pleasanton and Dublin to the west. There is some territory in the northeast corner of Alameda County that is not included in LARPD boundaries. The total land area within the boundary of LARPD is 243.5 square miles.

LARPD's bounds include two small portions of territory in the City of Pleasanton (which provides its own park and recreation services) in the Ruby Hills and Stoneridge

---

<sup>1</sup> California Public Resources Code §5780-5791

<sup>2</sup> California Public Resources Code §5786.

<sup>3</sup> California Government Code §56824.10.

areas. These areas, which are both entirely residential, were annexed in the 1980's into the City and not successively detached from LARPD.

---

### Extra-territorial Services

---

LARPD services are provided at facilities within its boundaries. Classes and facilities are made available to residents and non-residents. Non-residents are charged an additional 20 percent fee per activity for programs and classes offered by LARPD. Non-residents are charged higher park rental rates and facility rental rates depending on the park and facility.

LARPD also operates Camp Shelly, an overnight camping facility, located outside of its boundaries in South Lake Tahoe. Camp Shelley charges a fee of \$35 per night to residents and non-residents alike;<sup>4</sup> however, reservations are initially only taken in person at the LARPD community center, in order to give residents of the District priority.

---

### Unserved Areas

---

There are no areas within LARPD's existing boundaries that are lacking recreation and park services. However, in an effort to serve the expanding needs of the residents of Murray Township, East Bay Regional Park District (EBRPD) is responsible for the maintenance and operation of new regional parks, open space and trails in the Murray Township area, which is in LARPD's boundary, but more appropriately maintained by EBRPD given its mission, which is more regional in nature. Under a formal tax sharing agreement with LARPD that was put into place in 1992, EBRPD receives a portion of LARPD's property tax dollars for this service to the new regional parks.<sup>5</sup> LARPD continues to maintain five regional parks and preserves outside the City of Livermore that were created prior to the establishment of this agreement.

## SPHERE OF INFLUENCE

LARPD's Sphere of Influence (SOI) was established on August 28, 1975 as coterminous with the City of Livermore SOI. On April 16, 1987, LARPD's SOI was amended to include the District's boundary area and the Mountain House School District area. Three subsequent changes were made to LARPD's boundary between 1987 and the most recent SOI update in 2006. Two areas in the City of Dublin were detached from LARPD without corresponding SOI amendments—194 acres in 1992 and 1,029 acres in 1994. In the Eastern Dublin Property Owners' Reorganization (PA-00-025) in 2002, 1,120 acres were detached from LARPD with a corresponding adjustment to its SOI.

---

<sup>4</sup> [http://www.larpd.dst.ca.us/camp\\_shelly/info.html](http://www.larpd.dst.ca.us/camp_shelly/info.html)

<sup>5</sup> Agreement Between Livermore Area Recreation and Park District and East Bay Regional Park District for the Cooperative Provision of Park and Recreation Facilities and Services and Tax Sharing.

Most recently, Alameda LAFCo, upon recommendation found in the Municipal Service Review adopted in 2006, reduced the size of the LARPD SOI to exclude the two areas in the City of Dublin, which were previously detached from the District (as noted above). The justification for the reduction of the SOI was that it recognized the existing conditions and provided a technical correction for previous annexations. It was also noted that no change in regulation, land use or development would occur as a result of updating LARPD's SOI.<sup>6</sup>

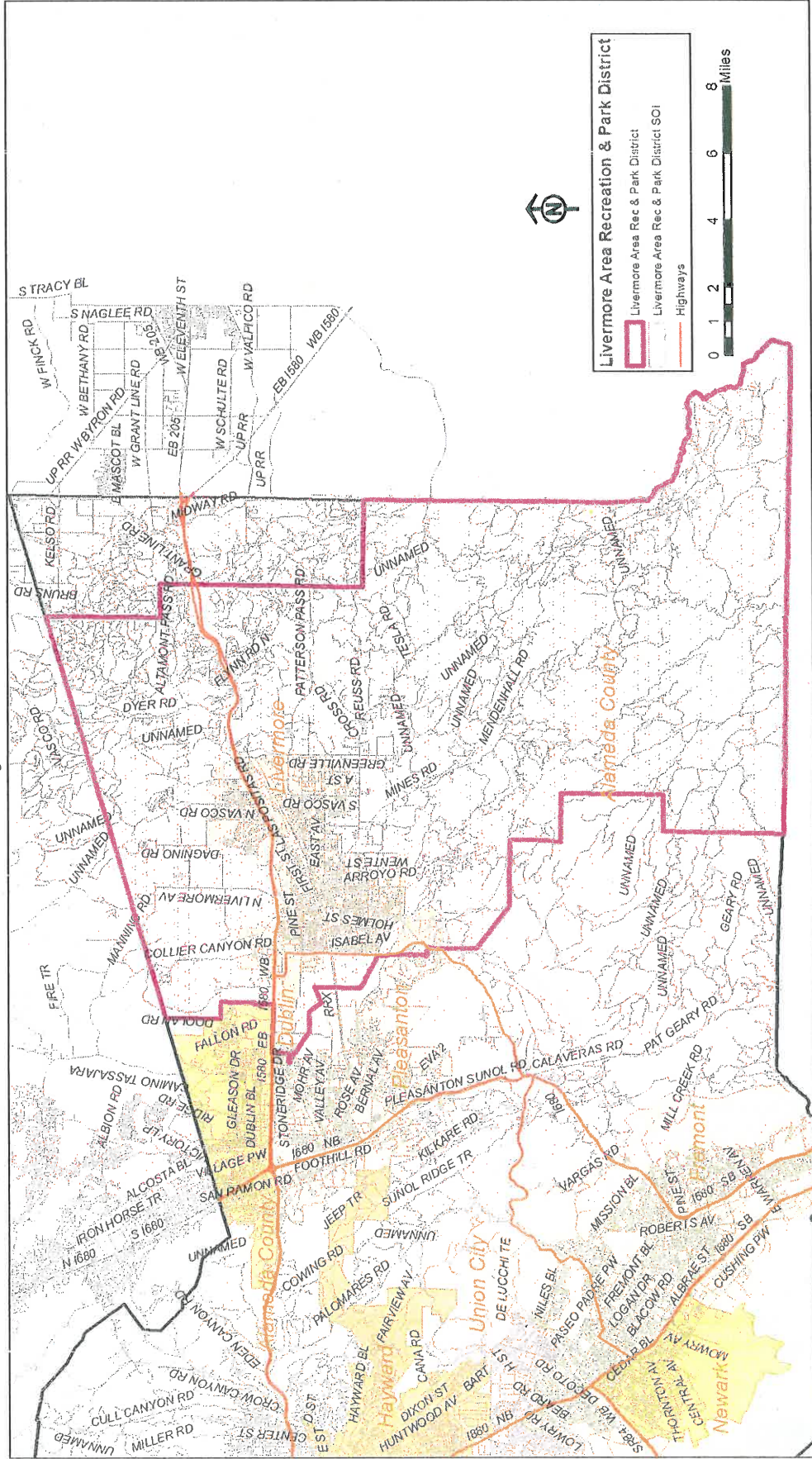
LARPD's SOI is generally coterminous with its boundaries with the exception of an area that extends outside of LARPD's bounds to include territory in the northeast to the county lines (Mountain House). LARPD's current bounds and SOI are shown in Figure 1-1.

---

<sup>6</sup> Alameda Local Agency Formation Commission Resolution No. 2006-49

Figure 1-1: LARPD Boundaries and SOI

Livermore Area Recreation & Park District Area and SOI\*  
July 2012



\*Agency sphere differs from the service area boundary

Created for Alameda LAFCo by the Alameda County Community Development Agency