



California Water Service

January 31, 2023

Quality. Service. Value.

Livermore Area Recreation and Park District Proposed Property Presentation

Presented By: John Freeman, District Manager

Introductions

- John Freeman, District Manager
- Darin Duncan, Director of Operations
- Robert Seeley, Community Affairs and Government Relations
- Blake Whitacre, Contracts Manager Legal Services
- Anthony Salgado, Livermore Superintendent
- Jordan Dickson, Engineer - Capital Project Delivery



Cal Water – System Overview

- **California Water Service has been proudly serving the Livermore community since 1927**
- **During this time, Cal Water service area has grown to nearly 19,000 service connections across 8 pressure zones**
- **Existing infrastructure consists of multiple well sites, 25 storage tanks, 42 booster pumps and nearly 205 miles of pipeline**

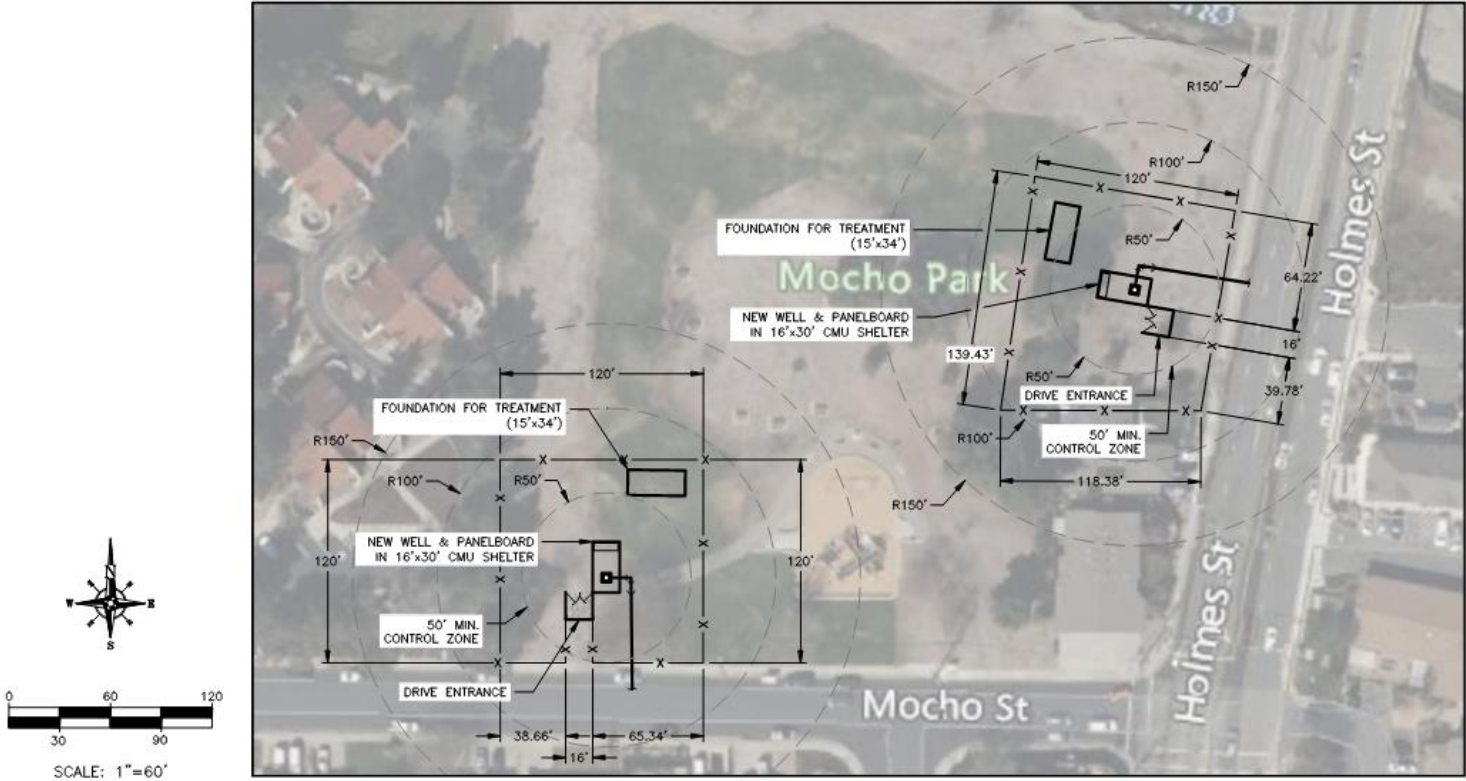


Project Background

- Cal Water is a regulated water utility and must ensure customers have access to reliable water that meets all state and federal drinking water regulations.
- We are seeking property for a future ground water well station to increase customer supply reliability, reduce operating costs associated with purchase water, and mitigate the effects of climate change on the District by maintaining a diverse resource portfolio (surface water/ground water).
- To that end, we have a duty as a water purveyor to our customers to maintain infrastructure by acquiring property at a fair market value – mutually acceptable appraiser.
- Cal Water has been in communication with LARPD since Spring 2022 working through locations that meet both entities current and future plans.



Proposed Property: Mocho Park



DETAIL 1 PURCHASE OPTION 1 & 2
 PROPOSED SITE PLAN
 SCALE: 1" = 60'



Property Justification

- Meets minimum Division of Drinking Water (DDW) sanitary separation and control zone – 50' radius.
- Property identified by Professional Hydrogeologist P.G. as “favorable” based on regional historic water quality and specific capacity data.
- Located in advantageous topographic region of the City that falls within the 610 pressure zone – elevation of property meets the need to service customers based on existing hydraulic grade without major infrastructure improvements.
- Existing PG&E infrastructure and 12” water main along Holmes St. will mitigate costly improvements needed to service the community.



Photos of typical Well & Booster Station



Questions?

